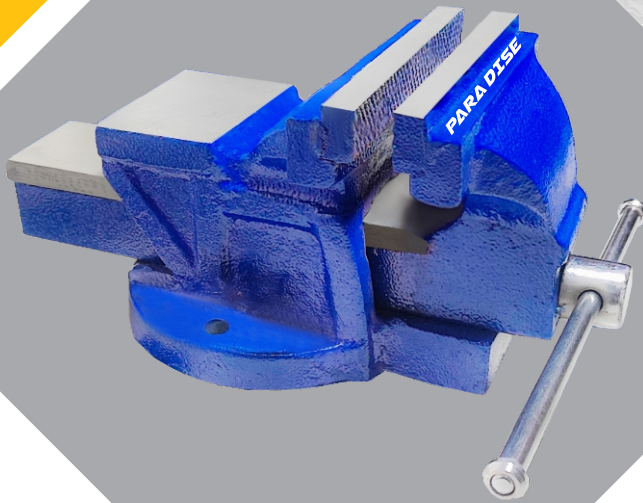
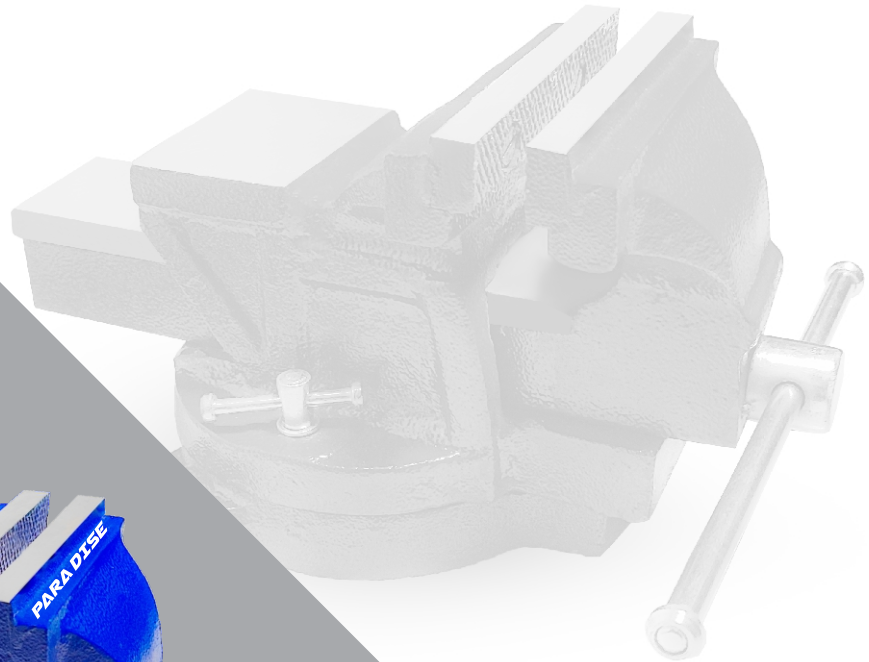


# PARADISE<sup>®</sup>

AN ISO 9001:2015 CERTIFIED CO.



# Product Catalogue

### Spanners

**PT-001**

**COMBINATION OPEN & RING SPANNER**

- Chrome-Vanadium Steel
- Drop Forged
- Hardened and Tempered
- Conforms to DIN 3113
- Finishes Available : Matt finish/ Head Polished / Customer Brand Available



| MM | Size | SAE    | Lenght in MM | Net Wt. in gms. | QTY/CTN Pcs |
|----|------|--------|--------------|-----------------|-------------|
| 6  |      | 1/4    | 100          | 18              | 1000        |
| 7  |      |        | 110          | 20              | 1000        |
| 8  |      | 5/16   | 120          | 24              | 800         |
| 9  |      |        | 130          | 28              | 600         |
| 10 |      | 3/8    | 140          | 38              | 600         |
| 11 |      | 7/16   | 150          | 48              | 500         |
| 12 |      |        | 160          | 55              | 400         |
| 13 |      | 1/2    | 170          | 60              | 300         |
| 14 |      | 9/16   | 180          | 80              | 300         |
| 15 |      |        | 190          | 90              | 200         |
| 16 |      | 5/8    | 200          | 105             | 200         |
| 17 |      | 11/16  | 210          | 115             | 200         |
| 18 |      |        | 220          | 130             | 160         |
| 19 |      | 3/4    | 230          | 145             | 120         |
| 20 |      |        | 240          | 170             | 120         |
| 21 |      | 13/16  | 250          | 175             | 100         |
| 22 |      | 7/8    | 260          | 185             | 100         |
| 23 |      |        | 270          | 230             | 80          |
| 24 |      | 15/16  | 280          | 260             | 80          |
| 25 |      | 1      | 290          | 300             | 60          |
| 26 |      |        | 300          | 325             | 60          |
| 27 |      | 1.1/16 | 310          | 350             | 60          |
| 28 |      | 1.1/8  | 320          | 400             | 40          |
| 29 |      |        | 330          | 455             | 40          |
| 30 |      |        | 340          | 480             | 40          |
| 32 |      | 1.1/4  | 360          | 575             | 40          |

**Metric Sizes Sets**

| No of Pcs./Sets | Size MM               | Net Wt. in gms. | QTY/CTN SET |
|-----------------|-----------------------|-----------------|-------------|
| 6               | 8,10,12,13,14,17      | 372             | 80          |
| 8               | 8,9,10,11,13,14,17,19 | 538             | 50          |
| 11              | 6-14,17,19            | 631             | 30          |
| 12              | 6-14,17,19,22         | 816             | 30          |
| 17              | 6-22                  | 1486            | 12          |
| 26              | 6-30,32               | 4861            | 6           |

**PT-003**

**COMBINATION OPEN & RING SPANNER ELLIPTICAL TYPE**

- Chrome-Vanadium Steel
- Drop Forged
- Hardened and Tempered
- Conforms to DIN 3113A
- Finishes Available : Full Polished / Satin Finish / Customer Brand Available



| MM | Size | SAE    | Lenght in MM | Net Wt. in gms. | QTY/CTN Pcs |
|----|------|--------|--------------|-----------------|-------------|
| 6  |      | 1/4    | 100          | 18              | 1000        |
| 7  |      |        | 110          | 22              | 1000        |
| 8  |      | 5/16   | 120          | 26              | 800         |
| 9  |      |        | 130          | 30              | 600         |
| 10 |      | 3/8    | 140          | 42              | 600         |
| 11 |      | 7/16   | 150          | 52              | 500         |
| 12 |      |        | 160          | 60              | 400         |
| 13 |      | 1/2    | 170          | 72              | 300         |
| 14 |      | 9/16   | 180          | 86              | 300         |
| 15 |      |        | 190          | 92              | 200         |
| 16 |      | 5/8    | 200          | 109             | 200         |
| 17 |      | 11/16  | 210          | 132             | 200         |
| 18 |      |        | 220          | 152             | 160         |
| 19 |      | 3/4    | 230          | 160             | 120         |
| 20 |      |        | 240          | 182             | 120         |
| 21 |      | 13/16  | 250          | 192             | 100         |
| 22 |      | 7/8    | 260          | 210             | 100         |
| 23 |      |        | 270          | 250             | 80          |
| 24 |      | 15/16  | 280          | 260             | 80          |
| 25 |      | 1      | 290          | 300             | 60          |
| 26 |      |        | 300          | 320             | 60          |
| 27 |      | 1.1/16 | 310          | 390             | 60          |
| 28 |      | 1.1/8  | 320          | 435             | 40          |
| 29 |      |        | 330          | 435             | 40          |
| 30 |      |        | 340          | 460             | 40          |
| 32 |      | 1.1/4  | 360          | 560             | 40          |

**Metric Sizes Sets**

| No of Pcs./Sets | Size MM               | Net Wt. in gms. | QTY/CTN SET |
|-----------------|-----------------------|-----------------|-------------|
| 6               | 8,10,12,13,14,17      | 418             | 60          |
| 8               | 6,7,8,9,10,14,17,19   | 516             | 40          |
| 8               | 8,9,10,11,13,14,17,19 | 600             | 40          |
| 12              | 6-14,17,19,22         | 910             | 24          |
| 25              | 6-28,30,32            | 4612            | 6           |
| 26              | 6-30,32               | 5047            | 4           |

**PT-002**

**COMBINATION OPEN & RING SPANNER Raised Panel**

- Carbon Steel
- Drop Forged
- Hardened and Tempered
- Chrome Plated
- Finishes Available : Matt finish/ Head Polished / Customer Brand Available



| MM | Size | SAE    | Lenght in MM | Net Wt. in gms. | QTY/CTN Pcs |
|----|------|--------|--------------|-----------------|-------------|
| 6  |      | 1/4    | 95           | 16              | 1000        |
| 7  |      |        | 97           | 20              | 1000        |
| 8  |      | 5/16   | 108          | 28              | 800         |
| 9  |      |        | 114          | 30              | 600         |
| 10 |      | 3/8    | 128          | 40              | 600         |
| 11 |      | 7/16   | 132          | 43              | 500         |
| 12 |      |        | 137          | 54              | 400         |
| 13 |      | 1/2    | 145          | 65              | 300         |
| 14 |      | 9/16   | 164          | 80              | 300         |
| 15 |      |        | 175          | 90              | 200         |
| 16 |      | 5/8    | 185          | 100             | 200         |
| 17 |      | 11/16  | 205          | 135             | 200         |
| 18 |      |        | 205          | 150             | 160         |
| 19 |      | 3/4    | 232          | 160             | 120         |
| 20 |      |        | 232          | 170             | 120         |
| 21 |      | 13/16  | 258          | 190             | 100         |
| 22 |      | 7/8    | 289          | 215             | 100         |
| 23 |      |        | 289          | 225             | 80          |
| 24 |      | 15/16  | 313          | 260             | 80          |
| 25 |      | 1      | 324          | 270             | 60          |
| 26 |      |        | 324          | 300             | 60          |
| 27 |      | 1.1/16 | 361          | 350             | 60          |
| 28 |      | 1.1/8  | 369          | 400             | 40          |
| 30 |      |        | 381          | 525             | 40          |
| 32 |      | 1.1/4  | 391          | 620             | 40          |

**Metric Sizes Sets**

| No of Pcs./Sets | Size MM                | Net Wt. in gms. | QTY/CTN SET |
|-----------------|------------------------|-----------------|-------------|
| 6               | 8,10,12,13,14,17       | 402             | 80          |
| 9               | 6,7,8,9,10,12,14,17,19 | 509             | 50          |
| 11              | 6-14,17,19             | 886             | 30          |

**PT-004**

**COMBINATION OPEN & RING SPANNER COLD STAMP**

- Chrome-Vanadium Steel
- Drop Forged
- Hardened and Tempered
- Conforms to DIN 3113
- Finishes Available : Matt finish/ Satin Finish/Head Polished / Customer Brand Available



| MM | Size | SAE    | Lenght in MM | Net Wt. in gms. | QTY/CTN Pcs |
|----|------|--------|--------------|-----------------|-------------|
| 6  |      | 1/4    | 100          | 18              | 1000        |
| 7  |      |        | 110          | 22              | 1000        |
| 8  |      | 5/16   | 120          | 26              | 800         |
| 9  |      |        | 130          | 30              | 600         |
| 10 |      | 3/8    | 140          | 42              | 600         |
| 11 |      | 7/16   | 150          | 52              | 500         |
| 12 |      |        | 160          | 60              | 400         |
| 13 |      | 1/2    | 170          | 72              | 300         |
| 14 |      | 9/16   | 180          | 86              | 300         |
| 15 |      |        | 190          | 92              | 200         |
| 16 |      | 5/8    | 200          | 109             | 200         |
| 17 |      | 11/16  | 210          | 132             | 200         |
| 18 |      |        | 220          | 152             | 160         |
| 19 |      | 3/4    | 230          | 160             | 120         |
| 20 |      |        | 240          | 182             | 120         |
| 21 |      | 13/16  | 250          | 192             | 100         |
| 22 |      | 7/8    | 260          | 210             | 100         |
| 23 |      |        | 270          | 250             | 80          |
| 24 |      | 15/16  | 280          | 260             | 80          |
| 25 |      | 1      | 290          | 300             | 60          |
| 26 |      |        | 300          | 320             | 60          |
| 27 |      | 1.1/16 | 310          | 390             | 60          |
| 28 |      | 1.1/8  | 320          | 435             | 40          |
| 29 |      |        | 330          | 435             | 40          |
| 30 |      |        | 340          | 460             | 40          |
| 32 |      | 1.1/4  | 360          | 560             | 40          |

**Metric Sizes Sets**

| No of Pcs./Sets | Size MM               | Net Wt. in gms. | QTY/CTN SET |
|-----------------|-----------------------|-----------------|-------------|
| 6               | 8,10,12,13,14,17      | 418             | 60          |
| 8               | 6,7,8,9,10,14,17,19   | 516             | 40          |
| 8               | 8,9,10,11,13,14,17,19 | 600             | 40          |
| 12              | 6-14,17,19,22         | 910             | 24          |
| 25              | 6-28,30,32            | 4612            | 6           |
| 26              | 6-30,32               | 5047            | 4           |



**Spanners**

**PT-005**

**DOUBLE OPEN END SPANNER**

- Carbon Steel
- Drop Forged
- Hardened and Tempered
- Chrome Plated



| Size  | Lenght in MM | Net Wt. in gms. | QTY/CTN Pcs |
|-------|--------------|-----------------|-------------|
| 6x7   | 98           | 20              | 800         |
| 8x9   | 102          | 25              | 600         |
| 10x11 | 110          | 35              | 400         |
| 12x13 | 128          | 50              | 300         |
| 14x15 | 150          | 65              | 200         |
| 16x17 | 162          | 75              | 160         |
| 18x19 | 181          | 110             | 120         |
| 20x21 | 199          | 155             | 100         |
| 22x23 | 208          | 165             | 80          |
| 24x26 | 225          | 245             | 60          |
| 24x27 | 225          | 245             | 60          |
| 25x28 | 233          | 265             | 40          |
| 30x32 | 248          | 325             | 40          |

**Metric Sizes Sets**

| No of Pcs. | Size MM  | Net Wt. in gms. | QTY/CTN SET |
|------------|--|-----------------|-------------|
| 6          | 6x7,8x9, 10x11,12x13, 14x15,16x17.                                       | 270             | 60          |
| 8          | 6x7,8x9, 10x11,12x13, 14x15,16x17, 18x19, 20x22                          | 535             | 30          |
| 12         | 6x7,8x9, 10x11,12x13, 14x15,16x17, 18x19, 20x22,21x23,24x27, 25x28,30x32 | 1535            | 12          |

**PT-006**

**DOUBLE OPEN END SPANNER  
LONG PATTERN**

- Chrome-Vanadium Steel
- Hardened and Tempered
- Chrome Plated
- Conform to DIN 3110



| Size  | Lenght in MM | Net Wt. in gms. | QTY/CTN Pcs |
|-------|--------------|-----------------|-------------|
| 6x7   | 122          | 23              | 800         |
| 8x9   | 140          | 32              | 600         |
| 10x11 | 155          | 50              | 400         |
| 12x13 | 171          | 62              | 300         |
| 14x15 | 190          | 80              | 200         |
| 16x17 | 204          | 110             | 160         |
| 18x19 | 220          | 150             | 120         |
| 20x22 | 235          | 200             | 100         |
| 21x23 | 248          | 230             | 80          |
| 24x26 | 267          | 320             | 60          |
| 24x27 | 267          | 275             | 60          |
| 25x28 | 280          | 345             | 40          |
| 30x32 | 301          | 450             | 40          |

**Metric Sizes Sets**

| No of Pcs. | Size MM  | Net Wt. in gms. | QTY/CTN SET |
|------------|--|-----------------|-------------|
| 6          | 6x7,8x9, 10x11,12x13, 14x15,16x17.                                       | 357             | 60          |
| 8          | 6x7,8x9, 10x11,12x13, 14x15,16x17, 18x19, 20x22                          | 707             | 30          |
| 12         | 6x7,8x9, 10x11,12x13, 14x15,16x17, 18x19, 20x22,21x23,24x27, 25x28,30x32 | 2007            | 12          |

**PT-007**

**DOUBLE OPEN END SPANNER  
COLD STAMP**

- Chrome-Vanadium Steel
- Drop Forged
- Hardened and Tempered
- Conforms to DIN 3110
- Finish Available : Mat finish/ Head Polished / Satin Finish / Customer Brand Available



| Size  | Lenght in MM | Net Wt. in gms. | QTY/CTN Pcs |
|-------|--------------|-----------------|-------------|
| 6x7   | 122          | 23              | 800         |
| 8x9   | 140          | 32              | 600         |
| 10x11 | 155          | 50              | 400         |
| 12x13 | 171          | 62              | 300         |
| 14x15 | 190          | 80              | 200         |
| 16x17 | 204          | 110             | 160         |
| 18x19 | 220          | 150             | 120         |
| 20x22 | 235          | 200             | 100         |
| 21x23 | 248          | 230             | 80          |
| 24x26 | 267          | 320             | 60          |
| 24x27 | 267          | 275             | 60          |
| 25x28 | 280          | 345             | 40          |
| 30x32 | 301          | 450             | 40          |

**Metric Sizes Sets**

| No of Pcs. | Size MM  | Net Wt. in gms. | QTY/CTN SET |
|------------|--|-----------------|-------------|
| 6          | 6x7,8x9, 10x11,12x13, 14x15,16x17.                                       | 357             | 60          |
| 8          | 6x7,8x9, 10x11,12x13, 14x15,16x17, 18x19, 20x22                          | 707             | 30          |
| 12         | 6x7,8x9, 10x11,12x13, 14x15,16x17, 18x19, 20x22,21x23,24x27, 25x28,30x32 | 2007            | 12          |

**PT-008**

**DOUBLE OPEN END SPANNER  
ELLIPTICAL PATTERN**

- Chrome-Vanadium Steel
- Hardened and Tempered
- Chrome Plated
- Finish : Full Polish/Satin
- Conform to DIN 3110



| Size  | Lenght in MM | Net Wt. in gms. | QTY/CTN Pcs |
|-------|--------------|-----------------|-------------|
| 6x7   | 122          | 24              | 800         |
| 8x9   | 140          | 32              | 600         |
| 10x11 | 155          | 55              | 400         |
| 12x13 | 171          | 76              | 300         |
| 14x15 | 190          | 112             | 200         |
| 16x17 | 204          | 130             | 160         |
| 18x19 | 220          | 165             | 120         |
| 20x22 | 235          | 210             | 100         |
| 21x23 | 248          | 240             | 80          |
| 24x26 | 267          | 315             | 60          |
| 24x27 | 267          | 315             | 60          |
| 25x28 | 280          | 360             | 40          |
| 30x32 | 301          | 485             | 40          |

**Metric Sizes Sets**

| No of Pcs. | Size MM  | Net Wt. in gms. | QTY/CTN SET |
|------------|--|-----------------|-------------|
| 6          | 6x7,8x9, 10x11,12x13, 14x15,16x17.                                       | 429             | 80          |
| 8          | 6x7,8x9, 10x11,12x13, 14x15,16x17, 18x19, 20x22                          | 804             | 40          |
| 12         | 6x7,8x9, 10x11,12x13, 14x15,16x17, 18x19, 20x22,21x23,24x27, 25x28,30x32 | 2204            | 16          |

**Spanners**

**PT-009**

**BI- HEXAGONAL RING SPANNER DEEP OFFSET**

- Carbon Steel/Chrome- Vanadium Steel
- Chrome Plated
- Hardened and Tempered
- Finishes Available : Mat finish/ Head Polished / Customer Brand Available



| MM    | Size SAE  | Lenght in MM | Net Wt. in gms. | QTY/CTN Pcs |
|-------|-----------|--------------|-----------------|-------------|
| 6X7   | 1/4X5/16  | 183          | 50              | 400         |
| 8X9   |           | 192          | 60              | 300         |
| 10X11 | 3/8X7/16  | 202          | 85              | 240         |
| 12X13 |           | 217          | 115             | 200         |
| 14X15 | 1/2X9/16  | 233          | 130             | 160         |
| 16X17 | 5/8X11/16 | 251          | 170             | 120         |
| 18X19 | 3/4X25/32 | 268          | 200             | 80          |
| 20X22 | 13/16X7/8 | 296          | 275             | 80          |
| 21X23 |           | 322          | 295             | 60          |
| 24X26 |           | 330          | 370             | 60          |
| 24X27 | 15/16X1   | 330          | 370             | 60          |
| 25X28 |           | 345          | 395             | 40          |
| 30X32 |           | 370          | 515             | 40          |

**Metric Sizes Sets**

| No of Pcs./Sets | Size MM  | Net Wt. in gms. | QTY/CTN SET |
|-----------------|--|-----------------|-------------|
| 6               | 6X7, 8X9, 10X11, 12X13, 14X15, 16X17   | 610             | 40          |
| 8               | 6X7, 8X9, 10X11, 12X13, 14X15, 16X17, 18X19, 20X22                             | 1085            | 20          |
| 12              | 6X7, 8X9, 10X11, 12X13, 14X15, 16X17, 18X19, 20X22, 21X23, 24X27, 25X28, 30X32 | 2660            | 10          |

**PT-010**

**BI- HEXAGONAL RING SPANNER DEEP OFFSET ELLIPTICAL TYPE**

- Chrome- Vanadium Steel
- Drop Forged
- Conforms to DIN 838
- Hardened and Tempered
- Finishes Available : Fully Polished/ Satin Finish / Customer Brand Available



| MM    | Size SAE  | Lenght in MM | Net Wt. in gms. | QTY/CTN Pcs |
|-------|-----------|--------------|-----------------|-------------|
| 6X7   | 1/4X5/16  | 183          | 50              | 400         |
| 8X9   |           | 192          | 70              | 300         |
| 10X11 | 3/8X7/16  | 202          | 92              | 240         |
| 12X13 |           | 217          | 125             | 200         |
| 14X15 | 1/2X9/16  | 233          | 150             | 160         |
| 16X17 | 5/8X11/16 | 251          | 170             | 120         |
| 18X19 | 3/4X25/32 | 268          | 210             | 80          |
| 20X22 | 13/16X7/8 | 296          | 305             | 80          |
| 21X23 |           | 322          | 325             | 60          |
| 24X26 |           | 330          | 395             | 60          |
| 24X27 | 15/16X1   | 330          | 395             | 60          |
| 25X28 |           | 345          | 425             | 40          |
| 30X32 |           | 370          | 560             | 40          |

**Metric Sizes Sets**

| No of Pcs./Sets | Size MM  | Net Wt. in gms. | QTY/CTN SET |
|-----------------|--|-----------------|-------------|
| 6               | 6X7, 8X9, 10X11, 12X13, 14X15, 16X17   | 655             | 40          |
| 8               | 6X7, 8X9, 10X11, 12X13, 14X15, 16X17, 18X19, 20X22                             | 1170            | 20          |
| 12              | 6X7, 8X9, 10X11, 12X13, 14X15, 16X17, 18X19, 20X22, 21X23, 24X27, 25X28, 30X32 | 2875            | 10          |

**PT-011**

**BI- HEXAGONAL RING SPANNER DEEP OFFSET COLD STAMP**

- Chrome- Vanadium Steel
- Drop Forged
- Conforms to DIN 838
- Hardened and Tempered
- Finishes Available : Matt Finish/Head Polished/ Satin Finish / Customer Brand Available



| MM    | Size SAE  | Lenght in MM | Net Wt. in gms. | QTY/CTN Pcs |
|-------|-----------|--------------|-----------------|-------------|
| 6X7   | 1/4X5/16  | 183          | 50              | 400         |
| 8X9   |           | 192          | 70              | 300         |
| 10X11 | 3/8X7/16  | 202          | 92              | 240         |
| 12X13 |           | 217          | 125             | 200         |
| 14X15 | 1/2X9/16  | 233          | 150             | 160         |
| 16X17 | 5/8X11/16 | 251          | 170             | 120         |
| 18X19 | 3/4X25/32 | 268          | 210             | 80          |
| 20X22 | 13/16X7/8 | 296          | 305             | 80          |
| 21X23 |           | 322          | 325             | 60          |
| 24X26 |           | 330          | 395             | 60          |
| 24X27 | 15/16X1   | 330          | 395             | 60          |
| 25X28 |           | 345          | 425             | 40          |
| 30X32 |           | 370          | 560             | 40          |

**Metric Sizes Sets**

| No of Pcs./Sets | Size MM  | Net Wt. in gms. | QTY/CTN SET |
|-----------------|--|-----------------|-------------|
| 6               | 6X7, 8X9, 10X11, 12X13, 14X15, 16X17   | 655             | 40          |
| 8               | 6X7, 8X9, 10X11, 12X13, 14X15, 16X17, 18X19, 20X22                             | 1170            | 20          |
| 12              | 6X7, 8X9, 10X11, 12X13, 14X15, 16X17, 18X19, 20X22, 21X23, 24X27, 25X28, 30X32 | 2875            | 10          |

**Spanners**

**PT-012**

**Open Ended Slogging Spanner**

- Chrome-Vanadium Steel
- Drop Forged
- Hardened and Tempered
- Finishes Available: Chrome Plated/Black Phosphate, Customer Brand Available



| Size | Lenght in MM | Net Wt. in gms. | QTY/CTN Pcs |
|------|--------------|-----------------|-------------|
| 24   | 180          | 325             | 80          |
| 27   | 180          | 345             | 60          |
| 30   | 190          | 460             | 50          |
| 32   | 190          | 545             | 50          |
| 36   | 210          | 690             | 30          |
| 41   | 230          | 950             | 25          |
| 46   | 250          | 1235            | 20          |
| 50   | 270          | 1520            | 15          |
| 55   | 305          | 2140            | 12          |
| 60   | 315          | 2440            | 10          |
| 65   | 345          | 3165            | 8           |
| 70   | 370          | 4100            | 5           |
| 75   | 382          | 4280            | 5           |
| 80   | 400          | 5150            | 4           |
| 85   | 400          | 5300            | 4           |
| 90   | 450          | 7800            | 3           |
| 95   | 450          | 7850            | 3           |
| 100  | 490          | 11500           | 2           |
| 105  | 490          | 12500           | 2           |
| 110  | 500          | 13400           | 2           |
| 115  | 500          | 14000           | 2           |

**PT-013**

**Ring Slogging Spanner**

- Chrome-Vanadium Steel
- Drop Forged
- Hardened and Tempered
- Finishes Available: Chrome Plated/Black Phosphate, Customer Brand Available



| Size | Lenght in MM | Net Wt. in gms. | QTY/CTN Pcs |
|------|--------------|-----------------|-------------|
| 22   | 164          | 190             | 100         |
| 24   | 164          | 200             | 100         |
| 27   | 180          | 255             | 80          |
| 30   | 190          | 375             | 60          |
| 32   | 190          | 380             | 60          |
| 34   | 195          | 390             | 60          |
| 36   | 204          | 500             | 60          |
| 41   | 225          | 670             | 50          |
| 46   | 238          | 900             | 30          |
| 50   | 250          | 1115            | 25          |
| 55   | 265          | 1225            | 20          |
| 60   | 274          | 1480            | 16          |
| 65   | 290          | 1920            | 15          |
| 70   | 320          | 2340            | 10          |
| 75   | 326          | 2800            | 8           |
| 80   | 350          | 3850            | 8           |
| 85   | 350          | 3950            | 6           |
| 90   | 390          | 5500            | 6           |
| 95   | 390          | 5550            | 3           |
| 100  | 420          | 6500            | 3           |
| 105  | 420          | 6800            | 3           |
| 110  | 450          | 8200            | 2           |
| 115  | 450          | 8300            | 2           |

**PT-014**

**Single Ended Open Jaw Spanner**

- Chrome-Vanadium Steel
- Drop Forged
- Hardened and Tempered
- Finishes Available: Chrome Plated/Black Phosphate, Customer Brand Available

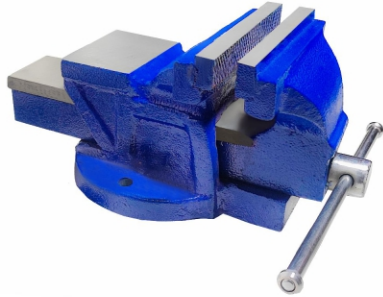


| Size | Lenght in MM | Net Wt. in gms. | QTY/CTN Pcs |
|------|--------------|-----------------|-------------|
| 6    | 73           | 8               | 1500        |
| 7    | 78           | 9               | 1500        |
| 8    | 93           | 13              | 1500        |
| 9    | 100          | 16              | 1200        |
| 10   | 104          | 22              | 1000        |
| 11   | 112          | 24              | 800         |
| 12   | 123          | 32              | 800         |
| 13   | 132          | 38              | 600         |
| 14   | 140          | 48              | 500         |
| 15   | 145          | 55              | 400         |
| 16   | 152          | 60              | 400         |
| 17   | 157          | 66              | 300         |
| 18   | 160          | 74              | 300         |
| 19   | 170          | 88              | 240         |
| 22   | 195          | 115             | 200         |
| 24   | 215          | 143             | 150         |
| 27   | 240          | 200             | 100         |

| Size | Lenght in MM | Net Wt. in gms. | QTY/CTN Pcs |
|------|--------------|-----------------|-------------|
| 30   | 265          | 260             | 80          |
| 32   | 275          | 320             | 60          |
| 34   | 275          | 348             | 60          |
| 36   | 300          | 474             | 40          |
| 41   | 340          | 620             | 40          |
| 46   | 380          | 775             | 30          |
| 50   | 415          | 960             | 20          |
| 55   | 450          | 1305            | 20          |
| 60   | 480          | 1525            | 10          |
| 65   | 520          | 1950            | 10          |
| 70   | 585          | 2286            | 6           |
| 75   | 605          | 2628            | 6           |
| 80   | 665          | 3700            | 4           |
| 85   | 665          | 4080            | 4           |

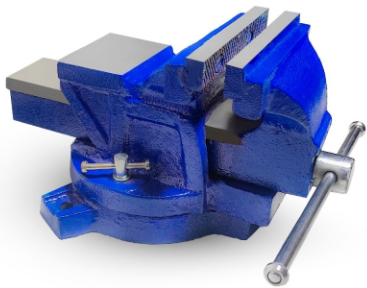
# Vices

**PT-101 CAST IRON BENCH VICE-FIXED BASE** ● CAST IRON BODY ● POLISHED JAWS



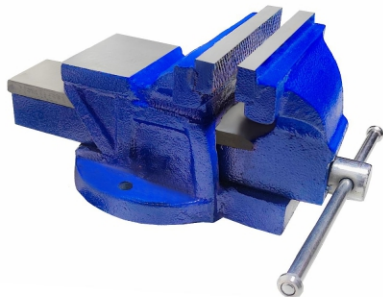
| No. | Inch | Size | mm | Net Weight/Kgs Approx | QTY/CTN Pcs |
|-----|------|------|----|-----------------------|-------------|
| 1   | 3    | 75   |    | 4.000                 | 6           |
| 3   | 4    | 100  |    | 4.200                 | 4           |
| 5   | 5    | 125  |    | 6.200                 | 2           |
| 6   | 6    | 150  |    | 9.100                 | 2           |
| 8   | 8    | 200  |    | 12.50                 | 2           |

**PT-102 CAST IRON BENCH VICE-SWIVEL BASE** ● CAST IRON BODY ● POLISHED JAWS



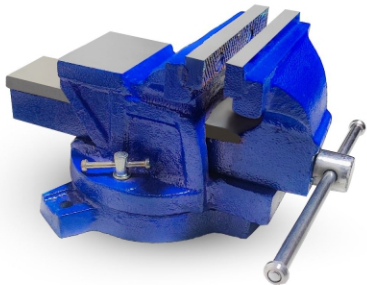
| No. | Inch | Size | mm | Net Weight/Kgs Approx | QTY/CTN Pcs |
|-----|------|------|----|-----------------------|-------------|
| 1   | 3    | 75   |    | 4.500                 | 4           |
| 3   | 4    | 100  |    | 4.800                 | 4           |
| 5   | 5    | 125  |    | 7.200                 | 2           |
| 6   | 6    | 150  |    | 10.000                | 2           |
| 8   | 8    | 200  |    | 13.500                | 1           |

**PT-103 S.G IRON BENCH VICE-FIXED BASE** ● S.G IRON BODY ● POLISHED JAWS



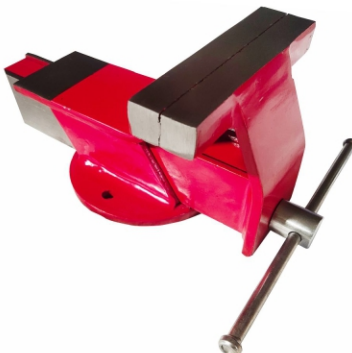
| No. | Inch | Size | mm | Net Weight/Kgs Approx | QTY/CTN Pcs |
|-----|------|------|----|-----------------------|-------------|
| 1   | 3    | 75   |    | 4.000                 | 6           |
| 3   | 4    | 100  |    | 4.200                 | 4           |
| 5   | 5    | 125  |    | 6.200                 | 2           |
| 6   | 6    | 150  |    | 9.100                 | 2           |
| 8   | 8    | 200  |    | 12.500                | 2           |

**PT-104 S.G IRON BENCH VICE-SWIVEL BASE** ● S.G IRON BODY ● POLISHED JAWS



| No. | Inch | Size | mm | Net Weight/Kgs Approx | QTY/CTN Pcs |
|-----|------|------|----|-----------------------|-------------|
| 1   | 3    | 75   |    | 4.500                 | 4           |
| 3   | 4    | 100  |    | 4.800                 | 4           |
| 5   | 5    | 125  |    | 7.200                 | 2           |
| 6   | 6    | 150  |    | 10.000                | 2           |
| 8   | 8    | 200  |    | 13.500                | 1           |

**PT-105 ALL STEEL BENCH VICE-FIXED BASE** ● ALL STEEL BODY ● POLISHED JAWS



| No. | Inch | Size | mm | Net Weight/Kgs Approx | QTY/CTN Pcs |
|-----|------|------|----|-----------------------|-------------|
| 1   | 3    | 75   |    | 3.000                 | 8           |
| 3   | 4    | 100  |    | 4.000                 | 6           |
| 5   | 5    | 125  |    | 5.000                 | 4           |
| 6   | 6    | 150  |    | 6.000                 | 4           |
| 8   | 8    | 200  |    | 8.000                 | 2           |

# Vices



## PT-106 ALL STEEL BENCH VICE-SWIVEL BASE

| No. | Inch | Size mm | Net Weight/Kgs Approx | QTY/CTN Pcs |
|-----|------|---------|-----------------------|-------------|
| 1   | 3    | 75      | 3.500                 | 6           |
| 3   | 4    | 100     | 4.500                 | 4           |
| 5   | 5    | 125     | 5.500                 | 4           |
| 6   | 6    | 150     | 6.500                 | 2           |
| 8   | 8    | 200     | 9.000                 | 1           |

- ALL STEEL BODY
- POLISHED JAWS



## PT-107 BABY VICE-FIXED BASE

| Inch  | Size mm | Net Weight/gms Approx | QTY/CTN Pcs |
|-------|---------|-----------------------|-------------|
| 1.1/2 | 37      | 600                   | 30          |
| 2     | 50      | 650                   | 30          |
| 2 1/2 | 62      | 700                   | 20          |
| 3     | 75      | 1000                  | 16          |

- CAST IRON BODY
- POLISHED JAWS



## PT-108 BABY VICE-SWIVEL BASE

| Inch  | Size mm | Net Weight/gms Approx | QTY/CTN Pcs |
|-------|---------|-----------------------|-------------|
| 1.1/2 | 37      | 650                   | 24          |
| 2     | 50      | 700                   | 20          |
| 2 1/2 | 62      | 750                   | 16          |
| 3     | 75      | 1100                  | 12          |

- CAST IRON BODY
- POLISHED JAW
- CLAMP FOR FIRM GRIP



## PT-109 ANVIL

| Size | Kgs Approx | QTY/CTN Pcs |
|------|------------|-------------|
| 5    |            | 4           |
| 10   |            | 2           |
| 20   |            | 1           |
| 50   |            | 1           |
| 100  |            | 1           |

- CAST IRON BODY
- POLISHED SURFACE

**Striking Tools**

**PT-201**

**BALL PEIN HAMMER WITH WOODEN HANDLE**



- DROP FORGED HEAD
- HARDENED & TEMPERED
- FITTED WITH CHEMICALLY TREATED & SEASONED/ ASH /HICKORY WOODEN HANDLE

| Size/gms | QTY/CTN Pcs |
|----------|-------------|
| 100      | 144         |
| 200      | 84          |
| 300      | 48          |
| 500      | 36          |
| 600      | 30          |
| 800      | 24          |

**PT-202**

**CROSS PEIN HAMMER WITH WOODEN**



- DROP FORGED HEAD
- HARDENED & TEMPERED
- FITTED WITH CHEMICALLY TREATED & SEASONED/ ASH /HICKORY WOODEN HANDLE

| Size/gms | QTY/CTN Pcs |
|----------|-------------|
| 100      | 144         |
| 200      | 84          |
| 300      | 48          |
| 500      | 36          |
| 600      | 30          |
| 800      | 24          |

**PT-203**

**SLEDGE HAMMER D.F WOODEN HANDLE**



- DROP FORGED HEAD
- HARDENED & TEMPERED HEAD
- FINISH : PAINTED/ POWDER COATED
- FITTED WITH CHEMICALLY TREATED & SEASONED/ ASH /HICKORY WOODEN HANDLE

| Size/Lbs | QTY/CTN Pcs |
|----------|-------------|
| 2        | 24          |
| 3        | 18          |
| 4        | 12          |
| 6        | 8           |
| 8        | 6           |
| 10       | 4           |
| 12       | 2           |
| 14       | 2           |
| 16       | 2           |

**PT-204**

**SLEDGE HAMMER WITHOUT HANDLE**



- DROP FORGED HEAD
- FINISH : PAINTED/ POWDER COATED
- HEAD SIZE AVAILABLE IN 0.5-10 KGS/ SEMI DROP FORGED

| Size/Lbs | QTY/CTN Pcs |
|----------|-------------|
| 2        | 32          |
| 3        | 24          |
| 4        | 24          |
| 6        | 12          |
| 8        | 12          |
| 10       | 8           |
| 12       | 6           |
| 14       | 6           |
| 16       | 4           |

**PT-205**

**CLAW HAMMER WOODEN HANDLE**



- DROP FORGED HEAD
- HARDENED & TEMPERED
- FITTED WITH CHEMICALLY TREATED & SEASONED/ ASH /HICKORY WOODEN HANDLE

| Size/gms | QTY/CTN Pcs |
|----------|-------------|
| 225      | 48          |
| 340      | 46          |
| 450      | 36          |
| 675      | 24          |

**PT-206**

**CLAW HAMMER STEEL SHAFT**



- DROP FORGED HEAD
- HARDENED & TEMPERED
- LEVELLED NAIL SLOT.
- FITTED WITH NON-SLIP SHOCK RESISTANT RUBBER GRIP

| Lbs | Size | gms | QTY/CTN Pcs |
|-----|------|-----|-------------|
| 1/2 |      | 225 | 48          |
| 3/4 |      | 350 | 42          |
| 1   |      | 450 | 36          |

**PT-207**

**CLUB HAMMER WITH WOODEN HANDLE**



- HARDENED & TEMPERED HEAD
- FINISH : PAINTED/ POWDER COATED
- FITTED WITH CHEMICALLY TREATED & SEASONED/ ASH /HICKORY WOODEN HANDLE

| Size/Lbs | QTY/CTN Pcs |
|----------|-------------|
| 2        | 20          |
| 2 1/2    | 16          |
| 3        | 12          |
| 4        | 12          |

**PT-208**

**BALL / CROSS PEIN HAMMER WITH FIBER GLASS HANDLE**



- INDUCTION HARDENED
- TEMPERED WITH POLISHED FACES
- FITTED WITH FIBER GLASS HANDLE

| Size/gms | QTY/CTN Pcs |
|----------|-------------|
| 100      | 120         |
| 200      | 72          |
| 300      | 48          |
| 500      | 36          |
| 600      | 24          |
| 800      | 16          |



**Striking Tools**

**PT-209**  
**SLEDGE HAMMER WITH FIBER GLASS HANDLE**

- INDUCTION HARDENED
- TEMPERED WITH POLISHED FACES
- FINISH: PAINTED /POWDER COATED
- FITTED WITH FIBER GLASS HANDLE

| Size/Lbs | QTY/CTN Pcs |
|----------|-------------|
| 2        | 20          |
| 3        | 18          |
| 4        | 12          |
| 6        | 8           |
| 8        | 6           |
| 10       | 4           |
| 12       | 2           |
| 14       | 2           |
| 16       | 2           |



**PT-210**  
**MACHINIST HAMMER**

- DROP FORGED HEAD
- HARDENED & TEMPERED
- FINISH: PAINTED /POWDER COATED
- FITTED WITH CHEMICALLY TREATED & SEASONED/ ASH/ HICKORY WOODEN HANDLE

| Size | QTY/CTN Pcs |
|------|-------------|
| 100  | 120         |
| 200  | 80          |
| 300  | 60          |
| 500  | 40          |
| 800  | 24          |
| 1000 | 16          |



**PT-211**  
**CHISEL FLAT/POINTED**

- HEAT TREATED WITH OR WITHOUT PROTECTIVE HAND GRIP
- FINISH: PAINTED /POWDER COATED
- DIA.16MM AND ABOVE

| Size/mm | QTY/CTN Pcs |
|---------|-------------|
| 16X200  | 60          |
| 16X250  | 50          |
| 16X300  | 40          |
| 18X200  | 60          |
| 18X250  | 40          |
| 18X300  | 40          |
| 18X350  | 30          |



**PT-212**  
**WRECKING BAR**

- HARDENED & TEMPERED
- FINISH: PAINTED /POWDER COATED

| Size/mm | QTY/CTN Pcs |
|---------|-------------|
| 16X450  | 24          |
| 16X500  | 20          |
| 16X600  | 20          |
| 18X450  | 20          |
| 18X500  | 16          |
| 18X600  | 16          |
| 18X800  | 12          |
| 18X1000 | 10          |



**PT-213**  
**TYRE LEVER FLAT**

- HARDENED & TEMPERED
- FINISH: ZINC PLATED/PAINTED /POWDER COATED

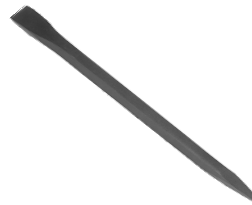
| mm  | Size | Inch | QTY/CTN Pcs |
|-----|------|------|-------------|
| 300 |      | 12   | 40          |
| 400 |      | 16   | 40          |
| 450 |      | 18   | 30          |
| 500 |      | 20   | 30          |
| 600 |      | 24   | 20          |
| 750 |      | 30   | 20          |



**PT-214**  
**CROW BAR**

- HARDENED & TEMPERED
- FINISH: PAINTED /POWDER COATED
- ONE END CHIESEL & OTHER POINTED

| Size mm | QTY/CTN Pcs |
|---------|-------------|
| 25X1200 | 10          |
| 25X1500 | 10          |
| 25X1800 | 10          |
| 28x1800 | 8           |
| 32x1800 | 6           |



**PT-215**  
**AXE WITH WOODEN HANDLE**

- HARDENED & TEMPERED
- FINISH: POLISHED / POWDER COATED HEAD
- FITTED WITH ASH / HICKORY WOOD HANDLE
- AVAILABLE WITH FIBER GLASS HANDLE ALSO

| Size/LBs | QTY/CTN Pcs |
|----------|-------------|
| 1.1/4    | 34          |
| 1.1/2    | 30          |
| 4        | 10          |
| 4.1/2    | 8           |



**PT-216**  
**CLAW HAMMER WITH FIBER GLASS HANDLE**

- HARDENED & TEMPERED
- FINISH: POLISHED / POWDER COATED HEAD
- FITTED WITH FIBER GLASS HANDLE

| Size/GMs | QTY/CTN Pcs |
|----------|-------------|
| 450      | 32          |



**PT-217**  
**SOFT FACE MALLET HAMMER**

- REPLACEABLE SOFT PLASTIC FACES
- FITTED WITH STEEL SHAFT WITH RUBBER HANDLE

| Size/MM | QTY/CTN Pcs |
|---------|-------------|
| 20      | 60          |
| 25      | 50          |
| 30      | 40          |
| 40      | 30          |
| 50      | 20          |



**PT-218**  
**RUBBER HAMMER WITH WOODEN HANDLE**

- RUBBER MOULDED HEAD
- FINISH: BLACK
- FITTED WITH SEASONAL/ASH / HICKORY WOOD HANDLE

| Size/MM | QTY/CTN Pcs |
|---------|-------------|
| 30      | 80          |
| 40      | 60          |
| 50      | 50          |
| 60      | 40          |
| 75      | 24          |
| 90      | 16          |



**Wood Working Tools**

**PT-301**

**JACK PLANE**

- MADE FROM FINE IRON CASTINGS
- CARBON STEEL BLADE
- PLASTIC/WOODEN HANDLE
- AVAILABLE IN CORRUGATED BASE ALSO



| NO | Inch | QTY/CTN Pcs |
|----|------|-------------|
| 4  | 9    | 16          |
| 5  | 14   | 10          |
| 6  | 18   | 8           |
| 7  | 22   | 8           |

**PT-302**

**BLOCK PLANE**

- MADE FROM FINE IRON CASTINGS
- FULLY HARDENED CARBON STEEL BLADE



| Size   | Inch | QTY/CTN Pcs |
|--------|------|-------------|
| 125 MM | 5    | 40          |
| 175 MM | 7    | 30          |

**PT-303**

**T-BAR GRAMPS**

- BAR MANUFACTURED FROM SPECIAL "T" BAR SECTION STEEL
- HEAD & SLIDE MADE OF ALLOY STEEL
- SUITABLE FOR HEAVY DUTY WORK



| FT   | Size | mm   | QTY/CTN Pcs |
|------|------|------|-------------|
| 2 FT |      | 600  | 10          |
| 3 FT |      | 900  | 8           |
| 4 FT |      | 1200 | 6           |
| 5 FT |      | 1500 | 6           |
| 6 FT |      | 1800 | 4           |
| 7 FT |      | 2100 | 4           |
| 8 FT |      | 2400 | 4           |

**PT-304**

**G CLAMP**

- FRAME MADE FROM MALLEABLE IRON
- STEEL SCREW WITH DROP HANDLE
- STOVE ENAMELED FINISH FRAME PREVENT RUST



| Size | mm  | QTY/CTN Pcs |
|------|-----|-------------|
| 2"   | 50  | 80          |
| 3"   | 75  | 60          |
| 4"   | 100 | 40          |
| 5"   | 125 | 20          |
| 6"   | 150 | 15          |
| 8"   | 200 | 10          |
| 10"  | 250 | 8           |
| 12"  | 300 | 6           |
| 14"  | 350 | 6           |

**PT-305**

**THREE PIECES MINI G CLAMP SET**

- FRAME MADE FROM MALLEABLE IRON
- HIGH QUALITY STEEL SCREW WITH DROP HANDLE
- STOVE ENAMELED FINISH FRAME PREVENT RUST



| Inch | Size | mm | QTY/CTN Pcs |
|------|------|----|-------------|
| 1    |      | 25 | 80          |
| 2    |      | 50 |             |
| 3    |      | 75 |             |

**PT-306**

**HAND DRILL**

- DIE CAST GEAR WHEEL AND BODY
- DOUBLE PINION GEARS FOR SMOOTH OPERATION
- WITH PLASTIC / WOODEN HANDLE



| Size | mm | QTY/CTN Pcs |
|------|----|-------------|
| 1/4  | 6  | 30 Pc       |
| 3/8  | 10 | 30 Pc       |

**PT-307**

**CARPENTER PINCERS**

- CARBON STEEL/CRV STEEL
- DROP FORGED
- INDUCTION HARDENED & TEMPERED
- CUSHION GRIP HANDLE



| Size | mm  | QTY/CTN Pcs |
|------|-----|-------------|
| 6"   | 150 | 120 Pc      |
| 7"   | 175 | 100 Pc      |
| 8"   | 200 | 80 Pc       |
| 10"  | 250 | 60 Pc       |

**PT-308**

**TOWER PINCERS**

- CARBON STEEL/CRV STEEL
- DROP FORGED
- INDUCTION HARDENED & TEMPERED
- CUSHION GRIP HANDLE



| Size | mm  | QTY/CTN Pcs |
|------|-----|-------------|
| 8"   | 200 | 100         |
| 9"   | 225 | 80          |
| 10"  | 250 | 60          |
| 12"  | 300 | 40          |

**Wood Working Tools**

**PT-309**  
**TOP CUTTER**



- CARBON STEEL/CRV STEEL
- DROP FORGED
- INDUCTION HARDENED & TEMPERED
- CUSHION GRIP HANDLE

| Size | mm  | QTY/CTN Pcs |
|------|-----|-------------|
| 6"   | 150 | 100         |
| 7"   | 175 | 80          |

**PT-310**

**HACKSAW FRAME**  
TUBULAR WITH PLASTIC HANDLE



- OVAL SECTION TUBULAR ENSURE PERFECT
- BALANCE AND RIGIDITY GRIP
- WITH 300 MM BLADE

| Inch | Size mm | QTY/CTN Pcs |
|------|---------|-------------|
| 12   | 300     | 60          |

**PT-311**  
**HACKSAW FRAME WOODEN HANDLE**



- HEAVY DUTY FRAME ENSURE PERFECT BALANCED GRIP
- WOODEN HANDLE
- FINISH : PAINTED

| Size | mm  | QTY/CTN Pcs |
|------|-----|-------------|
| 12"  | 300 | 48          |

**PT-312**

**JUNIOR HACKSAW FRAME**



- STRONG STEEL FRAME
- AVAILABLE IN STEEL / PLASTIC HANDLE
- FINISH CHROME PLATED

| Inch | Size mm | QTY/CTN Pcs |
|------|---------|-------------|
| 6    | 150     | 200         |

**PT-313**

**WOOD SPLITTING WEDGE**



- MADE FROM HIGH QUALITY STEEL
- HARDENED & TEMPERED
- WITH GROOVE

| Inch  | Size mm | QTY/CTN Pcs |
|-------|---------|-------------|
| 1     | 25      | 24          |
| 1.1/2 | 38      | 16          |
| 2     | 50      | 12          |

**PT-314**

**PITSAW**



- MATERIAL CARBON STEEL
- BRIGHT COLOUR

| Net Weight/Kgs Approx | Length/ft. |
|-----------------------|------------|
| 5                     | 7          |
| 6                     | 7          |
| 7                     | 7          |
| 8                     | 7          |

**PT-315**

**WOOD WORKING VICE**



- CAST IRON BODY
- POLISHED JAWS

| Inch | Size mm | QTY/CTN Pcs |
|------|---------|-------------|
| 6    | 150     | 8           |
| 7    | 175     | 6           |
| 8    | 200     | 6           |
| 9    | 225     | 4           |
| 10   | 250     | 4           |
| 12   | 300     | 2           |

**PT-316**

**CAULKING /SILICON GUN**



- HALF ROUNDED FOR BETTER CARTRIDGE HOLD
- FINISH : POWDER COATED

| QTY/CTN Pcs |
|-------------|
| 48          |

**Wrenches / Plumbing Tools**

**PT-401**

**PIPE WRENCH STILLSON TYPE**

- DROP FORGED FROM CARBON STEEL
- HARDENED & TEMPERED
- JAWS INDUCTION HARDENED
- FINISH: FULL PAINT/HALF PAINT



| Inch | Size | mm   | QTY/CTN Pcs. |
|------|------|------|--------------|
| 8    |      | 200  | 100          |
| 10   |      | 250  | 48           |
| 12   |      | 300  | 36           |
| 14   |      | 350  | 24           |
| 18   |      | 450  | 16           |
| 24   |      | 600  | 8            |
| 36   |      | 900  | 4            |
| 48   |      | 1200 | 4            |

**PT-402**

**ADJUSTABLE WRENCH**

- BLACK FINISHED (PHOSPHATED) / CHROME PLATED
- DROP FORGED FROM CARBON STEEL/CHROME VANADIUM STEEL
- TAPERED JAWS, SPECIALLY DESIGNED TO GET INTO NARROW OPENINGS
- FULLY HARDENED AND TEMPERED



| Inch | Size | mm  | QTY/CTN Pcs. |
|------|------|-----|--------------|
| 6    |      | 150 | 160          |
| 8    |      | 200 | 100          |
| 10   |      | 250 | 60           |
| 12   |      | 300 | 40           |
| 15   |      | 375 | 30           |

**PT-403**

**CHAIN PIPE WRENCH**

- JAWS MADE OUT OF SELECTED STEEL
- WITH HARDENED & TEMPERED REVERSIBLE JAWS
- Heavy Duty Chain



| Inch | Size | mm  | QTY/CTN Set. |
|------|------|-----|--------------|
| 2    |      | 50  | 6            |
| 3    |      | 75  | 4            |
| 4    |      | 100 | 2            |
| 6    |      | 150 | 2            |
| 8    |      | 200 | 2            |
| 10   |      | 250 | 1            |
| 12   |      | 300 | 1            |

**PT-404**

**PIPE VICE ALL STEEL**

- ALL STEEL FRAME
- HARDENED CARBON STEEL JAWS
- BASE IS PROVIDED WITH HOLES FOR FASTENING TO A BENCH
- POWDER PAINTED FOR LONGER LIFE



| Inch  | Size | mm  | QTY/CTN Pcs. |
|-------|------|-----|--------------|
| 1,1/2 |      | 37  | 12           |
| 2     |      | 50  | 10           |
| 3     |      | 75  | 8            |
| 4     |      | 100 | 4            |
| 6     |      | 150 | 2            |

**PT-405**

**PIPE VICE SELF LOCKING**

- FRAME MADE OUT OF MALLEABLE IRON
- HARDENED CARBON STEEL JAWS
- BASE IS PROVIDED WITH THREE HOLES FOR FASTENING TO A BENCH
- SELF LOCKING FRAME WITH ALL CAST COMPONENTS
- POWDER PAINTED FOR LONGER LIFE



| Inch  | Size | mm  | Pcs. |
|-------|------|-----|------|
| 1 1/2 |      | 37  | 12   |
| 2     |      | 50  | 8    |
| 2 1/2 |      | 63  | 6    |
| 3     |      | 75  | 4    |
| 4     |      | 100 | 2    |
| 6     |      | 150 | 2    |

**PT-406**

**PIPE VICE OPEN TYPE**

- FRAME MADE OUT OF MALLEABLE IRON
- HARDENED CARBON STEEL JAWS
- BASE IS PROVIDED WITH HOLES FOR FASTENING TO A BENCH
- POWDER PAINTED FOR LONGER LIFE



| Inch | Size |    | QTY/CTN Set. |
|------|------|----|--------------|
|      | Inch | mm |              |
| 1    | 25   | 10 |              |
| 2    | 50   | 8  |              |
| 3    | 75   | 6  |              |
| 4    | 100  | 4  |              |
| 6    | 150  | 1  |              |

**Wrench/ Plumbing Tools**

**PT-407**

**PIPE DIE SET**



- CAST IRON BODY
- FULLY HARDENED & TEMPERED JAWS FOR SMOOTH THREADING
- POWDER PAINTED FOR LONGER LIFE

| Inch            | Size | mm       | QTY/CTN Set. |
|-----------------|------|----------|--------------|
| 1/2, 3/4, 1     |      | 15-20-25 | 4            |
| 1 1/4, 1 1/2, 2 |      | 32-40-50 | 4            |
| 2 1/2, 3        |      | 62-75    | 2            |
| 4               |      | 100      | 1            |

**PT-408**

**PIPE CUTTER**



- MALLEABLE CAST BODY WITH SPECIAL STEEL CUTTER

| Inch | Size | mm  | QTY/CTN Set. |
|------|------|-----|--------------|
| 1    |      | 25  | 24           |
| 2    |      | 50  | 12           |
| 3    |      | 75  | 6            |
| 4    |      | 100 | 4            |
| 6    |      | 150 | 2            |

**PT-409**

**RATCHET PIPE DIE SET**



- CAST IRON BODY
- FULLY HARDENED & TEMPERED JAWS FOR SMOOTH THREADING
- POWDER PAINTED FOR LONGER LIFE

| Inch            | Size | mm       | QTY/CTN Set. |
|-----------------|------|----------|--------------|
| 1/2, 3/4, 1     |      | 15-20-25 | 4            |
| 1 1/4, 1 1/2, 2 |      | 32-40-50 | 4            |
| 2 1/2, 3        |      | 62-75    | 2            |
| 4               |      | 100      | 1            |
| 5               |      | 125      | 1            |
| 6               |      | 150      | 1            |

**PT-410**

**HYDRAULIC PIPE BENDING MACHINE**



- MILD STEEL MATERIAL
- MANUALLY OPERATED FOR LONG RADIUS HEAVY GAUGE CRW PIPES
- BENDING SUITABLE FOR 'C' CLASS

| Inch  | Size | mm    | QTY/CTN Set. |
|-------|------|-------|--------------|
| 1/2-2 |      | 12-50 | 1            |
| 1/2-3 |      | 12-75 | 1            |

**PT-411**

**COMBINED TAPS CUM DRILL**



- MADE FROM HIGH QUALITY STEEL

| Inch  | Size | mm |
|-------|------|----|
| 1/4   |      | 6  |
| 3/8   |      | 10 |
| 1/2   |      | 15 |
| 3/4   |      | 20 |
| 1     |      | 25 |
| 1 1/4 |      | 32 |
| 1 1/2 |      | 40 |
| 2     |      | 50 |

**PT-412**

**BASIN WRENCH**



- MADE OUT OF MALLEABLE IRON.
- DESIGNED FOR USE ON BASIN, TAP AND BATH BACK NUTS
- SUITABLE FOR HORIZONTAL OR VERTICAL USE IN CONFINED AREAS

| Size  | mm | QTY/CTN Pcs. |
|-------|----|--------------|
| 21X22 |    | 40           |

**Pliers**

**PT-501**

**COMBINATION PLIER**

- CARBON/ CHROME VANADIUM STEEL
- DROP FORGED
- INDUCTION HARDENED
- POLISHED HEAD
- HEAVY DUTY SLEEVE



| Size | mm  | QTY/CTN Set. |
|------|-----|--------------|
| 6"   | 150 | 120          |
| 7"   | 175 | 100          |
| 8"   | 200 | 80           |

**PT-502**

**LONG NOSE PLIER**

- CARBON/ CHROME VANADIUM STEEL
- DROP FORGED
- INDUCTION HARDENED
- POLISHED HEAD
- HEAVY DUTY SLEEVE



| Size | mm  | QTY/CTN Set. |
|------|-----|--------------|
| 6"   | 150 | 120          |
| 7"   | 175 | 100          |
| 8"   | 200 | 100          |

**PT-503**

**SIDE CUTTING PLIER**

- CARBON/ CHROME VANADIUM STEEL
- DROP FORGED
- INDUCTION HARDENED
- POLISHED HEAD
- HEAVY DUTY SLEEVE



| Size | mm  | QTY/CTN Set. |
|------|-----|--------------|
| 6"   | 150 | 120          |
| 7"   | 175 | 100          |
| 8"   | 200 | 100          |

**PT-504**

**LOCKING GRIP PLIER**

- JAWS MADE FROM CARBON STEEL
- HARDENED AND TEMPERED
- NICKLE CHROME PLATED



| Size | mm  | QTY/CTN Set. |
|------|-----|--------------|
| 5"   | 125 | 160          |
| 7"   | 175 | 80           |
| 10"  | 200 | 60           |

**PT-505**

**CIRCLIP PLIER**

EXTERNAL, INTERNAL, BEND & STRAIGHT NOSE

- CARBON STEEL
- DROP FORGED
- HARDENED & TEMPERED
- CUSHIONED GRIP HANDLE



| mm | Size | Inch | QTY/CTN Set. |
|----|------|------|--------------|
| 6  |      | 150  | 120          |
| 7  |      | 175  | 100          |
| 8  |      | 200  | 100          |

**PT-506**

**TIN CUTTER**

- CARBON STEEL
- DROP FORGED
- HARDENED & TEMPERED
- CUSHIONED GRIP HANDLE



| Size | mm  | QTY/CTN Set. |
|------|-----|--------------|
| 6"   | 150 | 120          |
| 8"   | 200 | 100          |
| 10"  | 250 | 60           |
| 12"  | 300 | 40           |
| 14"  | 350 | 30           |
| 16"  | 400 | 30           |

**PT-507**

**WATER PUMP PLIER-BOX JOINT**

- CARBON/ CHROME VANADIUM STEEL
- DROP FORGED
- INDUCTION HARDENED JAWS
- POLISHED HEAD
- CUSHIONED GRIP HANDLE



| Size | mm  | QTY/CTN Set. |
|------|-----|--------------|
| 7"   | 175 | 100          |
| 10"  | 250 | 80           |
| 12"  | 300 | 40           |

**PT-508**

**WATER PUMP PLIER-GROOVED / CHANNEL TYPE**

- CARBON/ CHROME VANADIUM STEEL
- DROP FORGED
- INDUCTION HARDENED JAWS
- POLISHED HEAD
- CUSHIONED GRIP HANDLE



| Size | mm  | QTY/CTN Set. |
|------|-----|--------------|
| 8"   | 200 | 100          |
| 10"  | 250 | 80           |
| 12"  | 300 | 40           |

**Measuring Tools**

**PT-601**

**TRY SQUARE**

- HIGH QUALITY CAST IRON HANDLE
- CARBON STEEL BLADE
- GRADUATION IN CMS/INCHES



| Size | mm  | QTY/CTN Pcs. |
|------|-----|--------------|
| 6"   | 150 | 150          |
| 8"   | 200 | 100          |
| 10"  | 250 | 80           |
| 12"  | 300 | 60           |
| 18"  | 450 | 24           |
| 24"  | 600 | 12           |

**PT-602**

**STEEL FOOT RULE**

- STAINLESS STEEL MATERIAL
- GRADUATION IN CMS/INCHES



| Size | mm  | QTY/CTN Pcs. |
|------|-----|--------------|
| 6"   | 150 | 300          |
| 12"  | 300 | 200          |
| 24"  | 600 | 100          |
| 39"  | 975 | 50           |

**PT-603**

**BEWEL TRY SQUARE**

- HIGH QUALITY CAST IRON HANDLE
- CARBON STEEL BLADE



| Size | mm  | QTY/CTN Pcs. |
|------|-----|--------------|
| 6"   | 150 | 100          |
| 8"   | 200 | 100          |
| 10"  | 250 | 80           |
| 12"  | 300 | 80           |

**PT-604**

**TAILOR SQUARE**

- FINISH POWDER COATED /ZINC PLATED
- USAGE FOR TAILORING
- L SHAPE



| Size  | QTY/CTN Pcs. |
|-------|--------------|
| 6x12  | 80           |
| 12x24 | 60           |
| 16x24 | 30           |

**PT-605**

**SPRING CALLIPERS**

(A) INSIDE, (B) OUTSIDE, (C), DIVIDER

- MANUFACTURED FROM SELECTED STEEL
- CALIPERS AND DIVIDERS HAVE A SPRING JOINT FOR PRECISION SETTINGS
- ADJUSTING NUT FITTED FOR OPENING OR CLOSING FOR LEGS



| Size | mm  | QTY/CTN Pcs. |
|------|-----|--------------|
| 4"   | 100 | 300          |
| 6"   | 150 | 200          |
| 8"   | 200 | 200          |
| 10"  | 250 | 120          |
| 12"  | 300 | 120          |

**PT-606**

**ENGINEERING SQUARE**

- MATERIAL STAINLESS STEEL
- L- SHAPE
- HEAVY BODY PINNED AT AN ANGLE OF 90°



| Inch  | Size | mm  | QTY/CTN Pcs. |
|-------|------|-----|--------------|
| 2.1/2 |      | 62  | 150          |
| 3     |      | 75  | 100          |
| 4     |      | 100 | 80           |
| 6     |      | 150 | 60           |
| 8     |      | 200 | 50           |
| 10    |      | 250 | 40           |
| 12    |      | 300 | 30           |

**PT-607**

**VERNIER CALLIPER**

- FINELY POLISHED STAINLESS STEEL FRAME
- STEPPED JAW CONSTRUCTION FOR INSIDE AND OUTSIDE MEASUREMENT
- GRADUATION IN MM / INCHES



| Size | mm  | QTY/CTN Pcs. |
|------|-----|--------------|
| 6"   | 150 | 60           |
| 8"   | 200 | 48           |
| 10"  | 250 | 48           |
| 12"  | 300 | 36           |

**PT-608**

**MICRO METER**

- HANDY ECONOMICAL TOOL FOR MEASURING PURPOSES
- AVAILABLE IN METRIC AND INCH SIZE



| mm    | QTY/CTN Pcs. |
|-------|--------------|
| 0-25  | 100          |
| 25-50 | 60           |
| 50-75 | 40           |

**Garage Tools**

**PT-701**

**BEARING PULLER THREE LEGS**

- Fully Drop forged from High Quality Steel
- Hardened and Tempered
- Chrome Plated



| Size | mm  | QTY/CTN Pcs. |
|------|-----|--------------|
| 3"   | 75  | 40           |
| 4"   | 100 | 36           |
| 6"   | 150 | 20           |
| 8"   | 200 | 12           |
| 10"  | 250 | 8            |
| 12"  | 300 | 8            |

**PT-702**

**BEARING PULLER TWO LEGS**

- Fully Drop forged from High Quality Steel
- Hardened and Tempered
- Chrome Plated



| Size | mm  | QTY/CTN Pcs. |
|------|-----|--------------|
| 3"   | 75  | 48           |
| 4"   | 100 | 40           |
| 6"   | 150 | 24           |
| 8"   | 200 | 16           |
| 10"  | 250 | 12           |
| 12"  | 300 | 12           |

**PT-703**

**TWO WAY WHEEL SPANNER**

- Fully Drop Forged
- Available in Carbon Steel
- Chrome Plated
- Hardened Socket



| Size mm | Length mm | QTY/CTN Pcs. |
|---------|-----------|--------------|
| 22x24   | 250       | 20           |
| 24x26   | 250       | 20           |
| 24x27   | 250       | 20           |
| 27x27   | 250       | 20           |
| 25x28   | 250       | 20           |
| 27x30   | 250       | 20           |
| 27x32   | 250       | 20           |
| 30x30   | 250       | 20           |
| 30x32   | 250       | 20           |
| 32x32   | 250       | 20           |
| 32x33   | 250       | 20           |

**PT-704**

**FOUR WAY WHEEL SPANNER**

- Fully Drop Forged
- Available in Carbon Steel
- Chrome Plated
- Hardened Socket



| Size | mm  | QTY/CTN Pcs. |
|------|-----|--------------|
| 14"  | 350 | 20           |
| 15"  | 375 | 20           |
| 16"  | 400 | 12           |
| 18"  | 450 | 12           |

**PT-705**

**TUBULER SPANNER**

- WITH / WITHOUT TOMMY BAR
- ZINC / CHROME PLATED



| Size mm | Length mm | QTY/CTN Pcs. |
|---------|-----------|--------------|
| 6x7     | 110       | 600          |
| 8x9     | 110       | 400          |
| 10x11   | 125       | 320          |
| 12x13   | 135       | 240          |
| 14x15   | 145       | 200          |
| 16x17   | 150       | 160          |
| 18x19   | 165       | 100          |
| 20x22   | 170       | 100          |
| 21x23   | 170       | 80           |
| 24x26   | 190       | 60           |
| 25x28   | 200       | 40           |
| 30x32   | 215       | 40           |

**PT-706**

**OIL CAN WESCO TYPE**

- Sheet Fabricated
- Available with fixed and flexible spout



| PINT | CAPACITY |     | QTY/CTN Pcs. |
|------|----------|-----|--------------|
|      |          | CC  |              |
| 1/4  |          | 125 | 100          |
| 1/2  |          | 250 | 100          |
| 3/4  |          | 375 | 100          |
| 1    |          | 500 | 100          |

**PT-707**

**GREASE GUN LEVER TYPE**

- Sheet Fabricated
- Available with fixed and flexible spout
- Lever Handle



| OZ | CAPACITY |     | QTY/CTN Pcs. |
|----|----------|-----|--------------|
|    |          | CC  |              |
| 10 |          | 300 | 15           |
| 15 |          | 420 | 12           |



**Leather Products**

**PT-801**

- 2 LARGE MAIN POCKET
- 2 MEDIUM SIZED STICED POCKETS
- 6 SMALL TOOL POCKETS
- 2 LEATHER HAMMER LOOPS & ONE METAL TAPE HOLDER
- DOUBLE STITCHED & RIVET ADDED FOR STRENGTH
- ADJUSTABLE WEB BLT WITH BUCKLE

**TEN POCKET SPLIT LEATHER ECONOMY WORK APRON**



|                 |
|-----------------|
| QTY/CTN<br>Pcs. |
| 50              |

**PT-802**

- OIL TANNED FINISH
- 2 LARGE MAIN POCKETS
- 2 MEDIUM SIZED FLARED & SIX SMALL TOLL POCKETS
- 2 METAL MOVEABLE HAMMER HOLDER & TWO LEATHER HAMMER LOOPS
- DOUBLE STITCHED & RIVET REINFORCED FOR ADDED STRENGTH
- 2" ADJUSTABLE HEAVY DUTY LEATHER BELT WITH METAL BUCKLE

**OIL TANNED PERFECTION LEATHER TOOL BAG**



|                 |
|-----------------|
| QTY/CTN<br>Pcs. |
| 25              |

**PT-803**

- 2 LARGE MAIN POCKETS
- 2 MEDIUM SIZED FLARED & 6 SMALL TOOL POCKETS
- 2 LEATHER HAMMER LOOPS & ONE LEATHER TAPE POCKET
- DOUBLE STITCHED & RIVET REINFORCED FOR ADDED STRENGTH
- ADJUSTABLE BELT WITH QUICK RELEASE BUCKLE
- FINISH AVAILABLE IN CUSTOMIZED DOUBLE / SINGLE COLOUR

**TEN POCKET SPLIT LEATHER CARPENTER APRON LARGE CAPACITY**



|                 |
|-----------------|
| QTY/CTN<br>Pcs. |
| 50              |

**PT-804**

- 1 LARGE MAIN POCKETS
- 1 MEDIUM SIZED NAIL POCKETS
- 2 BELT LEVEL INNER POCKETS
- 6 SMALL PENCIL POCKET TWO METAL FIXED HAMMER HOLDERS
- DOUBLE STITCHED & RIVET REINFORCED
- WIDE BELT TUNNEL SLOT

**LARGE CAPACITY NAIL & TOOL BAG**



|                 |
|-----------------|
| QTY/CTN<br>Pcs. |
| 50              |

**PT-805**

- LARGE MAIN POCKET
- 1 MEDIUM SIZED NAIL POCKET , WITH A METAL TAPE HOLDER
- SMALL TOLL POCKETS & ONE KNIFE SHEATH, WITH ONE LEATHER HAMMER LOOP
- DOUBLE STITCHED & RIVET FOR ADDED STRENGTH
- ADJUSTABLE BELT WITH BUCKLE

**FIVE POCKET SPLIT LEATHER NAIL & TOOL BAG**



|                 |
|-----------------|
| QTY/CTN<br>Pcs. |
| 50              |

**PT-806**

- OIL TANNED FINISH
- 1 LARGE MAIN POCKETS
- 1 MEDIUM SIZED NAIL POCKETS
- 2 BELT LEVEL INNER POCKETS
- 6 SMALL PENCIL POCKET TWO METAL FIXED HAMMER HOLDERS
- DOUBLE STITCHED & RIVET REINFORCED
- WIDE BELT TUNNEL SLOT

**OIL TANNED LARGE CAPACITY NAIL & TOOL BAG**



|                 |
|-----------------|
| QTY/CTN<br>Pcs. |
| 50              |

**Leather Products**

- OIL TANNED FINISH
- 2" ADJUSTABLE HEAVY LEATHER BELT WITH METAL BUCKLE
- 1 LEATHER TAPE POCKET
- 2 SMALL POCKETS
- DOUBLE STITCHED & RIVET REINFORCED FOR ADDED STRENGTH

**PT-807**

**OIL TANNED SCAFFOLDING LEATHER**

|                 |
|-----------------|
| QTY/CTN<br>Pcs. |
| 25              |



- CORDLESS DRILL HOLSTER OF LEATHER DESIGNED TO HOLD POPULAR DRILLS WITH SAFETY STRAPS

**PT-808**

**LEATHER DRILL HOLDER**

|                 |
|-----------------|
| QTY/CTN<br>Pcs. |
| 200             |



**PT-809**

**LEATHER NAIL POUCH TOOL BAG**

- 2 LARGE MAIN POCKET
- 2 SMALL SIDE POCKET
- ADJUSTABLE NYLON BELT WITH PLASTIC BUCKLE

|                 |
|-----------------|
| QTY/CTN<br>Pcs. |
| 50              |



**PT-810**

**LEATHER WELDING WORK APRON**

- LEATHER WELDING APRON WITH 1 LARGE POCKET & 1 SMALL POCKET WITH STRAP

|                 |
|-----------------|
| QTY/CTN<br>Pcs. |
| 50              |



**FIX/ MOVABLE LEATHER HAMMER HOLDER**

- LEATHER WITH MOVABLE / FIX HOLDER
- CHROME PLATED BUCKLE & RIVET

**PT-811**

|                 |
|-----------------|
| QTY/CTN<br>Pcs. |
| 200             |



**PT-812**

**LEATHER TAPE HOLDER**

- LEATHER TAPE HOLDER WITH SAFETY STRAPS
- WIDE BELT SLOT

|                 |
|-----------------|
| QTY/CTN<br>Pcs. |
| 200             |



**ALSO AVAILABLE IN CUSTOMIZED COLOUR SHADES**



**PARADISE**<sup>®</sup>

## **PARADISE TOOL**

111, Ganesh Nagar Basti Nau, Jalandhar-144002 (Pb.) India

M : +91-95922-24111, +91-94172-71780

E-mail : [paradisetoolsexport@gmail.com](mailto:paradisetoolsexport@gmail.com)

[www.paradisexports.com](http://www.paradisexports.com)